

Pacific Humanitarian Talanoa

FALE-PASIFIKA

FACILITY AIDING LOCALLY-LED ENGAGEMENT (FALE) IN THE PACIFIC REGION



PART OF

START
NETWORK



PIANGO

Pacific Islands Association of
Non-governmental Organisations | Association Des Ongs
Desiles Du Pacifique

By Akmal Ali
Coordinator

Talanoa

Definition: Traditional term in Fiji and the Pacific for inclusive, participatory, and transparent dialogue.

Purpose:

- Share stories, build empathy.
- Make wise decisions for the collective good.

Process:

- Involves sharing ideas, skills, and experiences through storytelling.

Trust and Knowledge:

- Participants build trust and advance knowledge through empathy and understanding.

Avoidance of Blame:

- Critical observations inconsistent with Talanoa.
- Focus on building mutual trust and respect.

Fostering Stability:

- Talanoa creates stability and inclusiveness in dialogue.

Safe Space for Decision-Making:

- Embraces mutual respect.
- Platform for decision-making for the greater good.

Key Takeaway: Talanoa offers a cultural framework for inclusive dialogue, fostering trust, stability, and mutual respect, leading to wise decisions for the collective good.



PIANGO

Pacific Islands Association of
Non-governmental Organisations

Association Des Ongs
Desiles Du Pacifique

The Conch Shell symbolizes “Communication”. The sound of the conch shell is a summons for people to gather in a particular place. The circular sand drawing reflects ‘Spiritual Unity or Oneness’.



- Vision: A United Pacific: Strengthening the Resilient Responsiveness of our Kainga for a Peaceful and Prosperous Vanua.
- Mission: To support the creation of a secure enabling environment for strong, effective, accountable, and adaptive Institutions that provide an inclusive representation and common voice platforms and structured mechanisms for policy influencing which is rooted in our Pacific cultural practices and values; through sustainable equitable and genuine partnerships for resilient development.

PIANGO Membership Network



1. **ASUNGO** – American Samoa
2. **ACFID** - Australia
3. **CICSO** – Cook Islands
4. **CID** – New Zealand
5. **CSFT** – Tonga
6. **DSE** – Solomon Islands
7. **FANGO** – FSM
8. **FCOSS** – Fiji
9. **KANGO** – Kiribati
10. **NIANGO** – Nauru
11. **NIUANGO** – Niue
12. **MICNGOs** – Marshall Islands
13. **Payuta** – Guam
14. **PNGCSF** – PNG (*Interim*)
15. **SUNGO** – Samoa
16. **TANGO** – Tuvalu
17. **UTLN** – Kanaky
18. **VANGO** – Vanuatu
19. **HITI TAU** – French Polynesia
20. **BANGO**- Palau
21. **FONGTIL** – Timor Leste
22. **(ACV) Association Culturelle de Vailala (Wallis and Futuna)-** Wallis & Futuna
23. **MANGO**- CNMI
24. **West Papua** – Pasefika

Oceania

Micronesia



30°N

15°N

0°

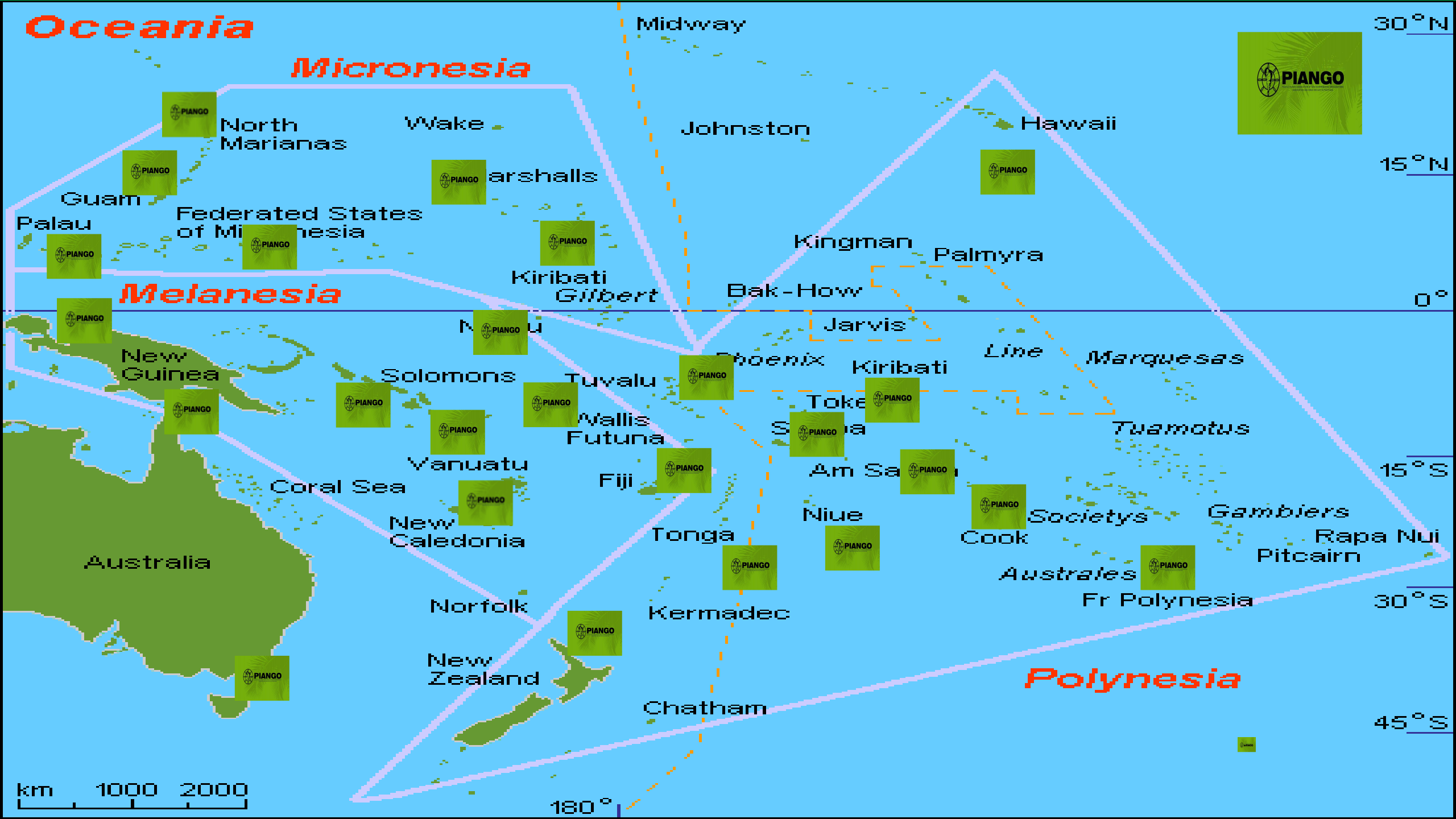
15°S

30°S

45°S

180°

km 1000 2000



North
Marianas

Wake

Midway

Johnston

Hawaii

Guam

Federated States
of Micronesia

Marshalls

Kiribati
Gilbert

Kingman

Palmyra

Melanesia

Northern
Mariana

Bak-How

Jarvis

Phoenix

Kiribati

Line

Marquesas

New
Guinea

Solomons

Tuvalu

Vallis
Futuna

Tokelau

Tuamotus

Vanuatu

Fiji

Samoa

Am Samoa

Societys

Gambiers

Rapa Nui

Australia

Coral Sea

New
Caledonia

Tonga

Niue

Cook

Australes

Fr Polynesia

Pitcairn

Norfolk

Kermadec

New
Zealand

Chatham

Polynesia

Pacific Humanitarian Challenges

1. Natural Disasters
2. Climate Change
3. Limited Access to Healthcare
4. Food Security
5. Water and Sanitation Issues
6. Economic Vulnerability
7. Governance and Political Stability
8. Limited Infrastructure
9. Environmental Degradation
10. Migration and Displacement

FALE-PASIFIKA

FACILITY AIDING LOCALLY-LED ENGAGEMENT (FALE) IN THE PACIFIC REGION



PART OF

START
NETWORK



PIANGO

Pacific Islands Association of
Non-governmental Organisations

Association Des Ongs
Desiles Du Pacifique

WHAT ARE HUBS?

LOCALLY-LED NETWORKS



Hubs are about **local leadership**. They design their own governance structures, which ensure majority of the leaders are from local organisations or authorities.

WIDE MEMBERSHIP



Hubs have a broad and diverse membership, majority of whom are from local organisations or entities, e.g. community based organisations, local government, academia... This dramatically increases the **reach and impact of the network**.

LONG TERM SYSTEM CHANGE



Hubs seek to **tackle systemic issues** within the humanitarian sector, each with their own locally-rooted vision for system change. By establishing **long term, locally-based and sustainable structures**, Hubs are able to create real impact in their countries, and beyond.

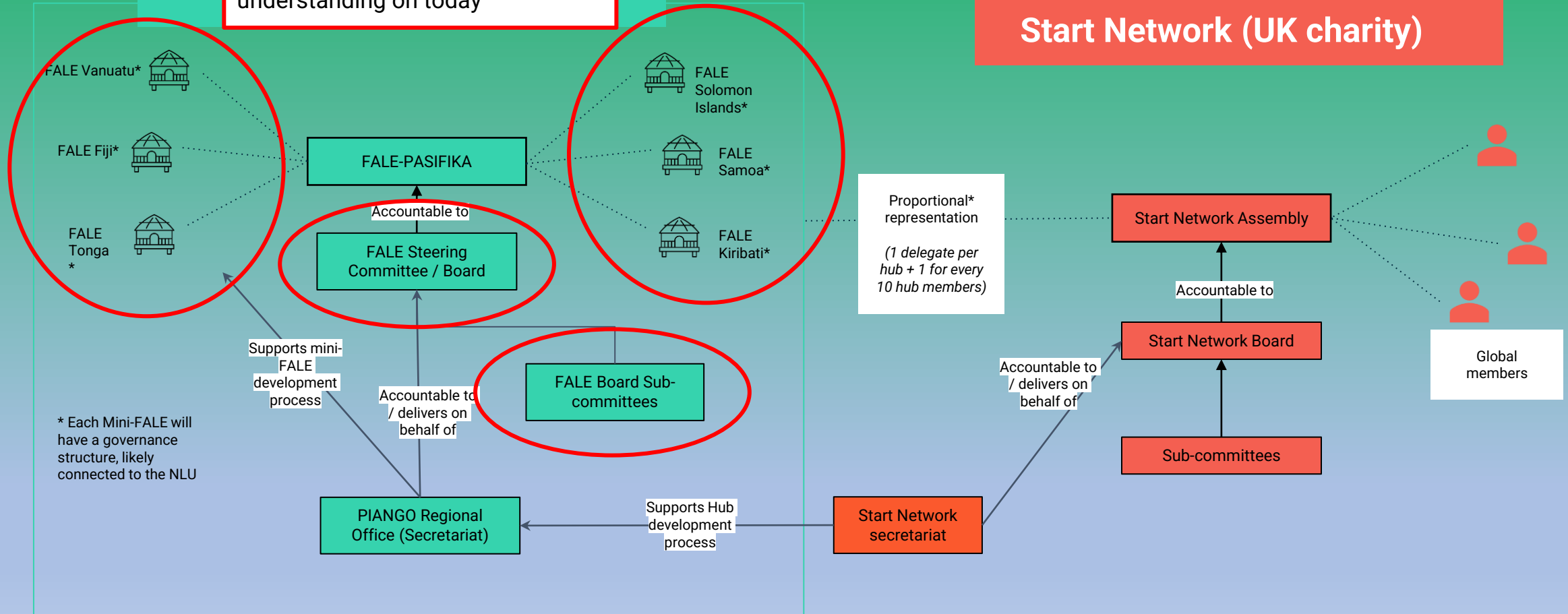
PROGRAMME / INITIATIVE



Hubs design and implement **programmes or initiatives** that put their vision for change into practice, such as innovation, disaster risk financing programmes or equitable fund mechanisms.

Network and hub governance

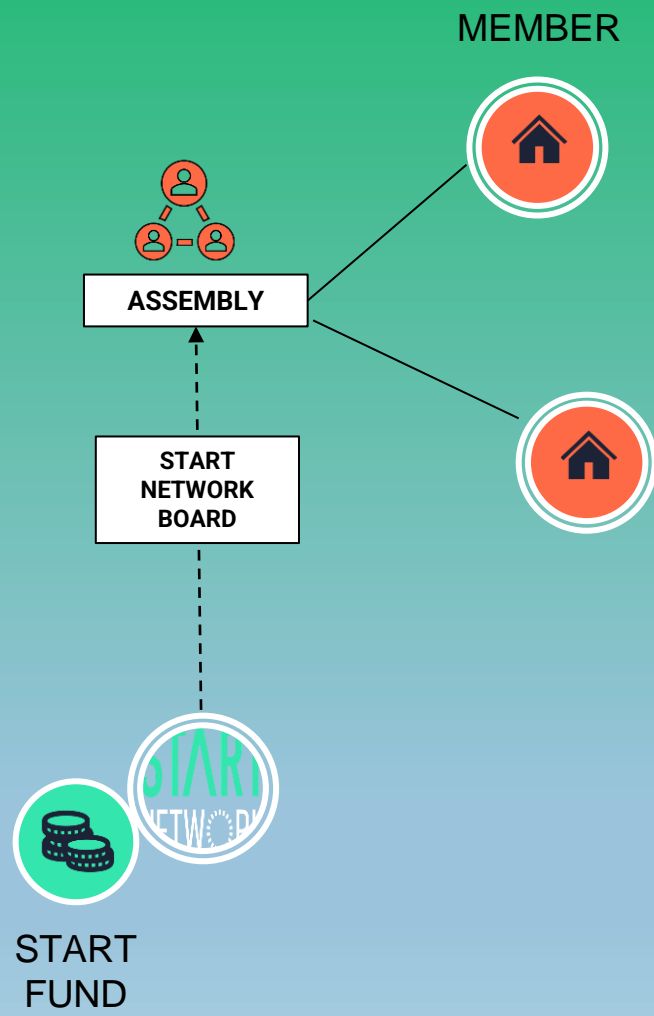
These are the elements we would like to focus on developing clear understanding on today



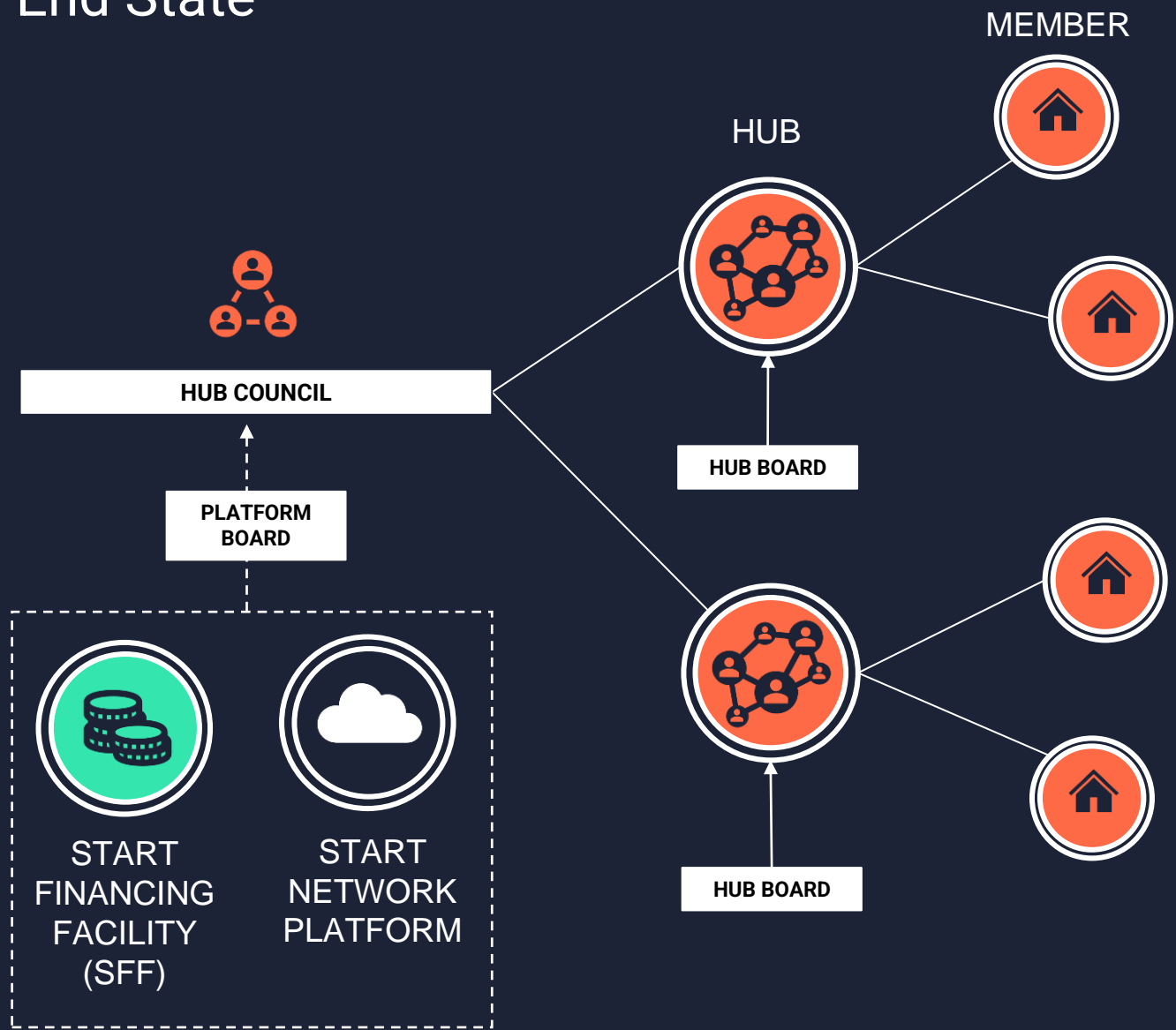
The INGOs who become part of FALE due to START membership.

	Australia	Fiji	Micronesia, Federal States of	New Zealand	Niue	Papua New Guinea	Solomo n Islands	Tonga	Vanuatu
ActionAid	1								
ALIMA	1								
Care International	1	1				1			1
Catholic Relief Services			1						
HelpAge International	1	1							
Islamic Relief	1								
Oxfam		1			1	1	1		1
Plan International	1	1				1	1		
Save the Children UK	1	1		1				1	
World Vision	1			1					
Total No	8	5	1	2	1	3	2	1	2

Current Start Network



"End State"



Objectives

Alternate Structure

- Inclusive of Local, National, International, Government, Private Sector, Academia, UN Agencies, and All stakeholders.

Skills

- Building skills set of our volunteers
- Locally led means our local actors are taking the lead

FALE FINANCING FACILITY

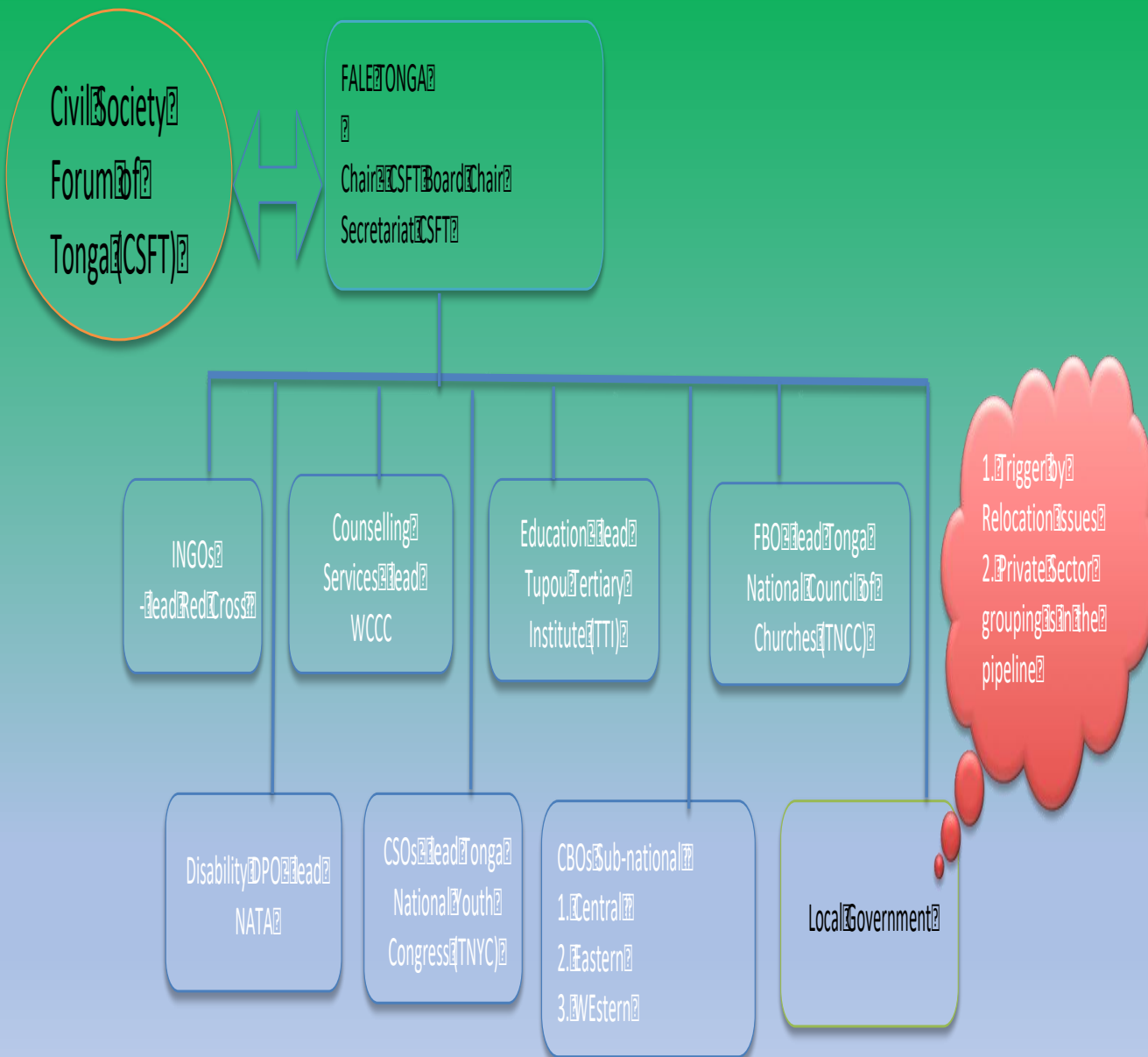
- Anticipatory Funds
- Community Trigger Response funds
- FALE Fund

Our Way of Working!

1. Open Door/Walls Policy
2. Bring what you have!
3. Talanoa Framework



Hub Readiness	Output	Description
Mission	Vision / Impact Model	A vision and theory of change that leads the hub to achieving desired impact and creating a new type of value to the humanitarian system; committed to driving locally-led action; social and cultural sustainability of the vision; interconnected and interdependent (peer network)
Strength of governance and legal status	Hub hosting / registration	A form of legal identity or mutual agreement; an entity to sign agreements on behalf of the collective
	Hub governance arrangements	Independent leadership/governance body, made up of minimum 50% local representatives; Accountability mechanism of governance body - member assembly type mechanism
Strength of Network	Hub Members	Minimum 50% local membership; Diversity
	Hub Membership Protocol	A membership process or policy setting out hub member rights, expectations, criteria, contributions etc.
	Hub Agreement / MoU	A collaboration that offers mutual value that is held together by a form of ‘agreement’
Sustainability	Hub Business Model	An operating / financial model that demonstrates pathways for sustainability that include ways to leverage funding independently, funding through programmes, possible membership fee structure etc.
	Hub Programme(s)	The hub has an innovation and / or a fund / financing facilitating that they are testing or implementing



TONGA FALE STEERING COMMITTEE FOR HUMANITARIAN HUB



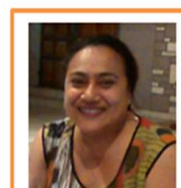
Sione Taumoevalau
INGO



'Ofa G. Likiliki
Counselling



Ungatea Kata
Education



Keasi Pongi
CSFT



Vanesa Lolohea
CSOs



Drew Havea
Chair



Rev. 'Ikani T. Tolu
FBO



'Emele Latu
Secretariat



Melesila Weilert
Western District Rep.



Siaosi Vaka
DPO



Sioko Noa
Eastern District Rep



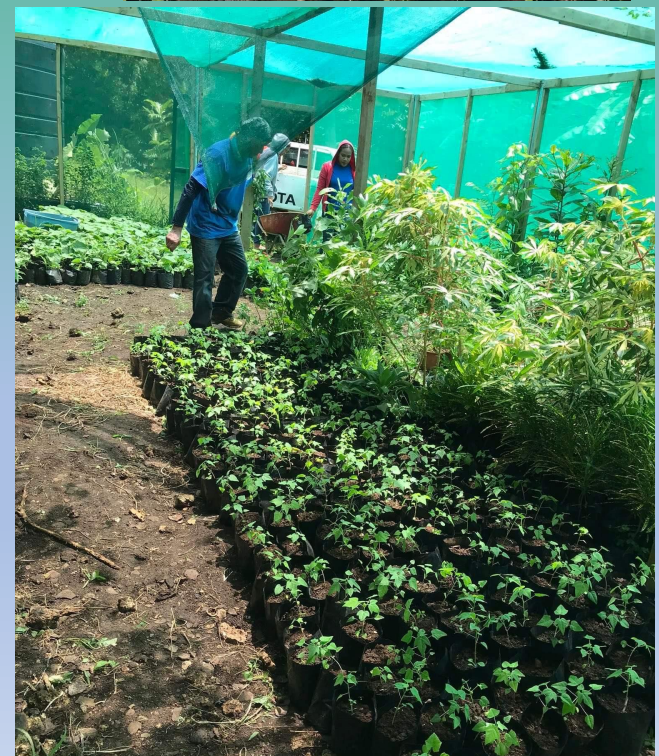
Tae Pahulu
Central District-Rep

FALE Tonga

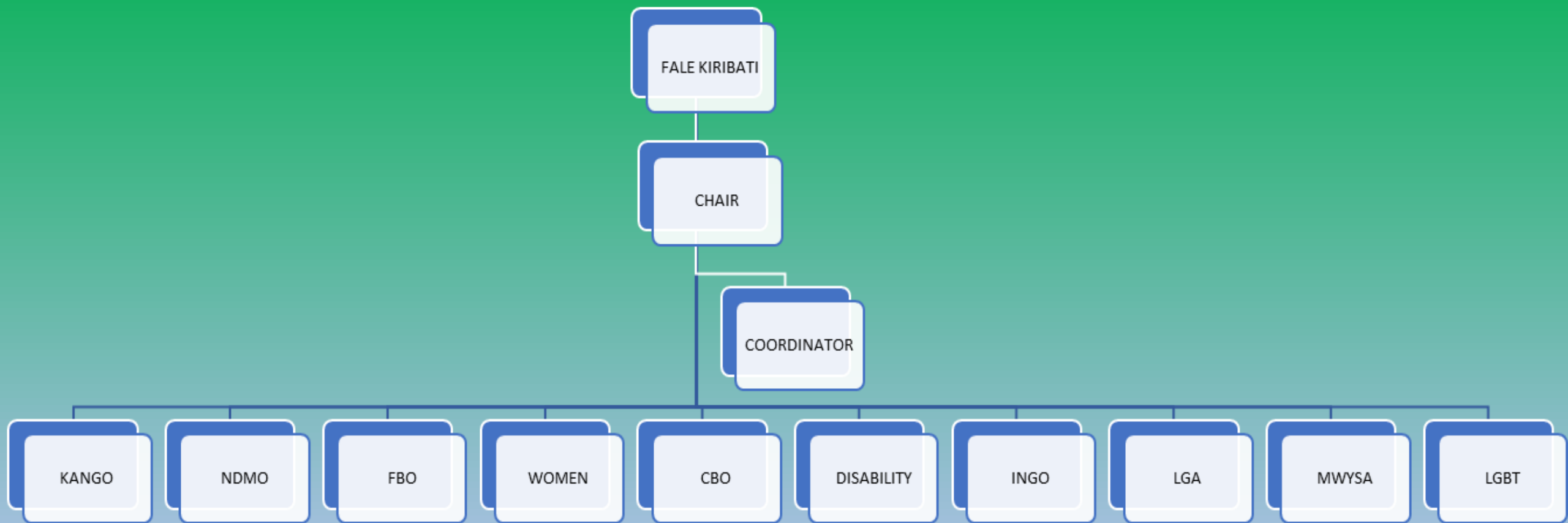


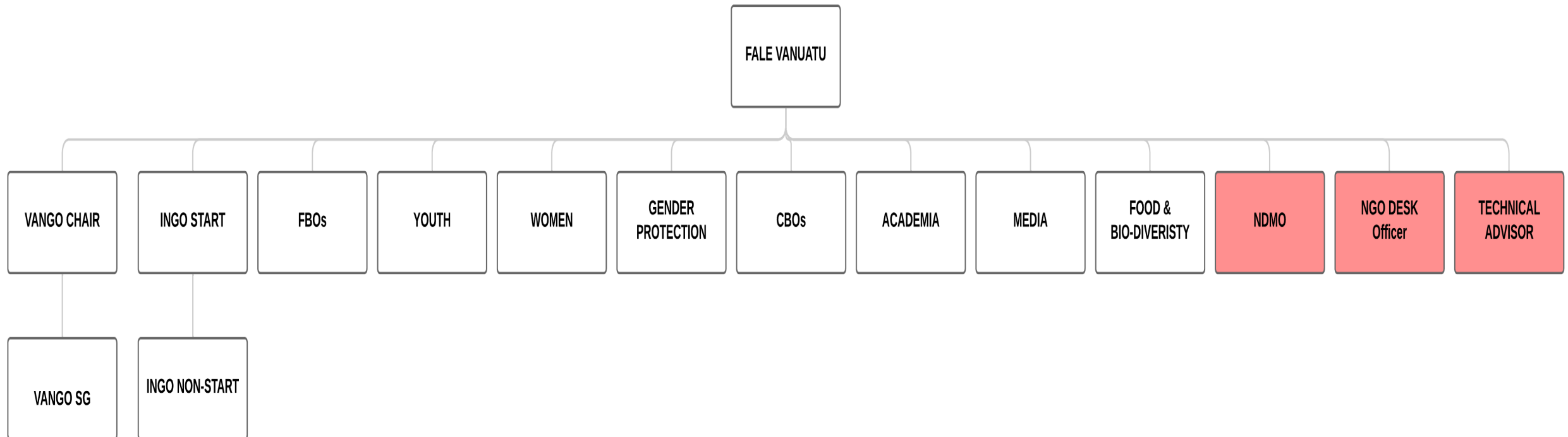












FALE Vanuatu So Far!!!

- Has a secretariat;
- Has a coordinator;
- Got a core funding to test and 5 CBO's got 10k usd to do response work.

FALE SAMOA

CHAIR

COORDINATOR

SUNGO

CBO

HEALTH

WOMEN

EDUCATION
& ACADEMIA

YOUTH

FBO

DISABILITY

MEDIA

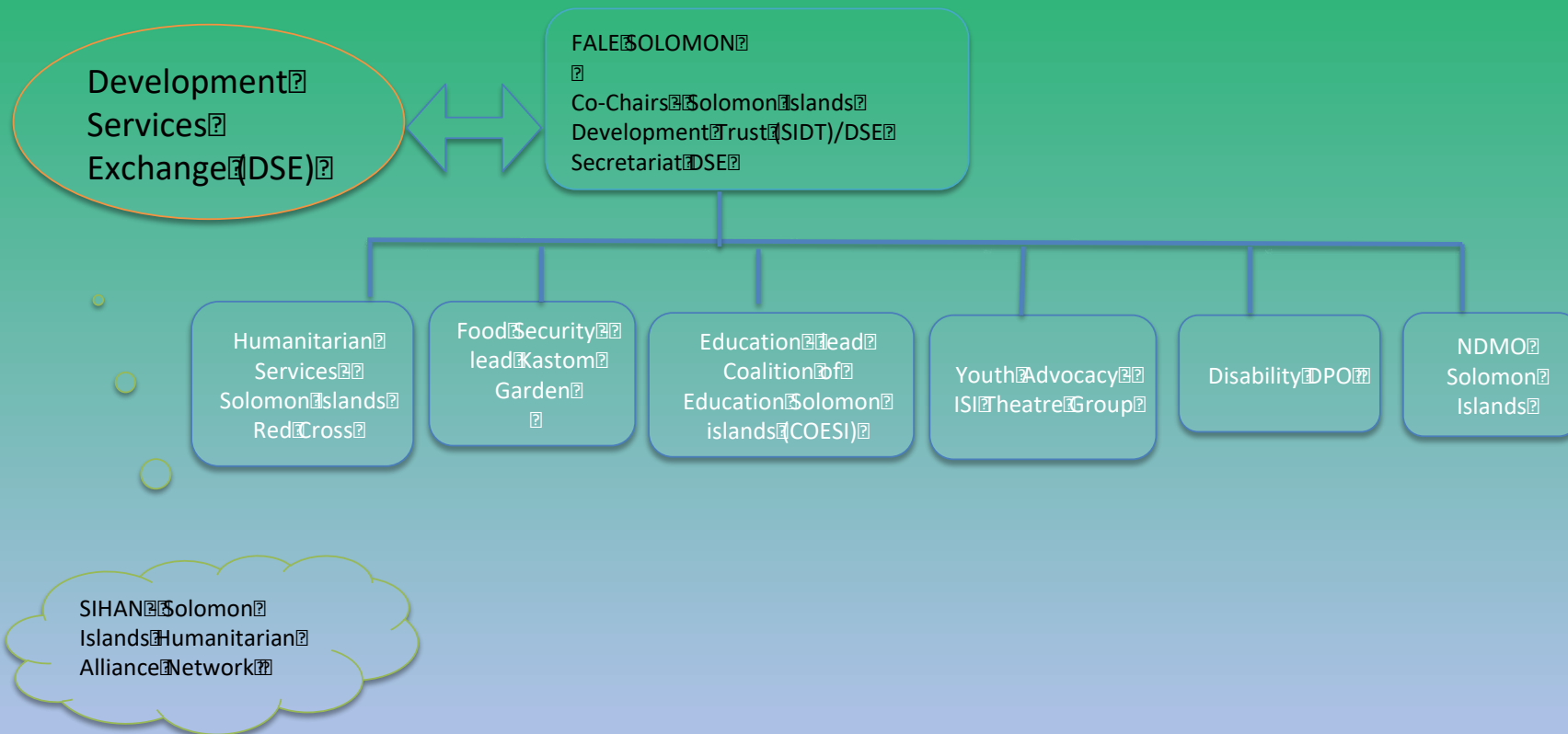
SPORT

FOOD &
BIODIVERSITY

INGO







FALE Viti Structure

FALE Viti Forum

- ❑ *START Network Members*
- ❑ *FCOSS Members*
- ❑ *FALE+ Network*
 - CBO
 - FBO
 - NGO
 - INGO

Steering Committee

Chairperson

FALE
Coordinator

CBO 1

CBO 2

Women

Youth

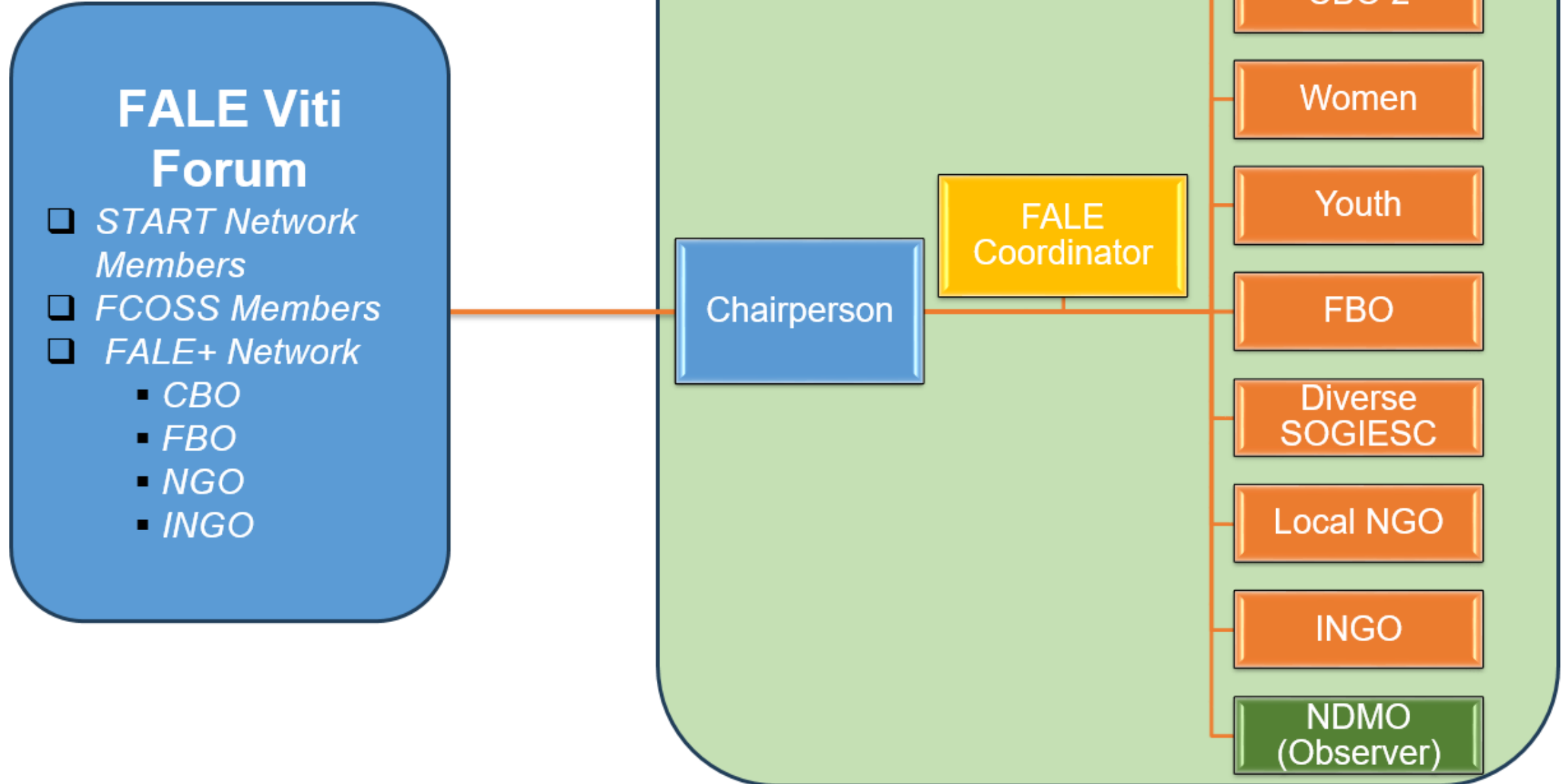
FBO

Diverse
SOGIESC

Local NGO

INGO

NDMO
(Observer)





FALE Pacific Steering Committee

1. **Chair of PIANGO:** Ms. Marstella Jack
2. **Executive Director of PIANGO:** Ms. Emeline Siale Ilolahia
3. **FRDP TWG Representative:**
 1. Mr. Filipino Masaurua (Oxfam in the Pacific)
 2. Alternate: Mr. Jofiliti Veikoso (Youth TWG) *(Elected a week ago)*
4. **INGO Representatives:**
 1. Ms. Ana Albuquerque (ADRA)
 2. Ms. Claire Leow (Airlink) *(Elections concluded today)*
5. **FALE Fiji:** Mr. Sepesa Rasili
6. **FALE Kiribati:** Mr. Maiaa Iona
7. **FALE Samoa:** Mr. Fuimaono Falefa Lima
8. **FALE Solomon Islands:** Mr. Inia Barry
9. **FALE Tonga:** Mr. Drew Havea
10. **FALE Vanuatu:** Mr. William Nasak
11. **FALE Pacific Coordinator:** Mr. Akmal Ali

Conclusion

- FALE Pasifika unites diverse changemakers in the Pacific, envisioning a resilient region with informed solutions and strong financial backing.
- Inclusivity empowers local communities to lead, while collaboration ensures efficiency and effectiveness.
- the initiative prioritizes local involvement, fostering transformative change through innovative and human-centric approaches.
- Together, we can forge a brighter future for the Pacific through FALE Pasifika.

