

The logo for the Sahel Regional Fund (SRF) is displayed in white text on a red rectangular background. The letters 'SRF' are large and stylized, with the 'S' and 'R' being taller than the 'F'.

SRF

SAHEL REGIONAL FUND

# The SRF and its potential as a pooled fund

---

*Accelerating the localisation of aid in  
emergencies*

[www.sahelregionalfund.org](http://www.sahelregionalfund.org)

@Sahel\_R\_Fund



# The SRF, a regional **humanitarian fund governed by NGOs** and hosted by DRC

## Key objectives to support the implementation of more efficient response models

### 1. Quality Funding

- ✓ Predictable, flexible, and multi-year funding
- ✓ Simplified reporting requirements

### 2. Localisation

- ✓ Increase funding directly accessible to N/LNGO
- ✓ Capacity sharing with N/LNGO through mutualization of efforts of SRF partners & FMU
- ✓ Localisation strategy co-design with national actors/national platforms



# SRF programmatic strategic ambition

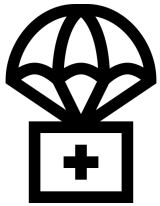
*SRF Principles & Strategic priorities are detailed in the SRF Charter & SRF Strategic framework*



Putting **people and protection at the centre** through integrated multisector approach and increased accountability toward affected population



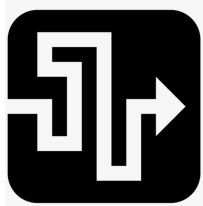
Designed to support and reinforce **principled humanitarian action**



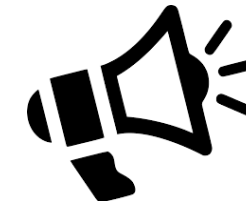
Scaling up humanitarian operation in cost effective way & supporting **program adaptation**



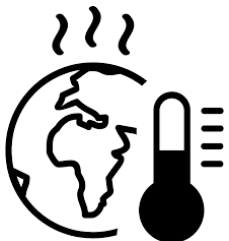
**Coordination and partnerships:** engaging with local stakeholders, first responders, endogenous system and other development and peacebuilding actors at **area level = nexus**



Striving for humanitarian access in **Hard-to-reach areas**



Supporting **Action research & Advocacy**



Adapting response to climate change and environmental degradation



# SRF added value

## Funding strategy

- Multiyear funding
- Regional approach
- Alignment with humanitarian needs and priorities identified in Humanitarian Response Plans
- Equitable & strategic partnerships with fair distribution of overheads to N/LNGO
- Investment in operational research projects

## Governance system

- Greater say for NGOs
- Inclusive governance

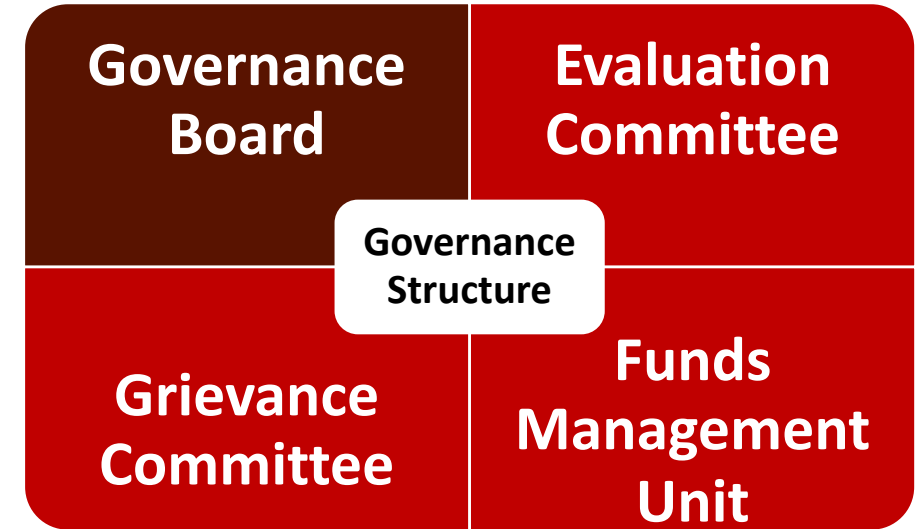
## Programmatic strategy

- Needs-based, people centered, integrated multisector assistance through multi-country consortia
- Evidence-based and innovative approaches
- Capacity to monitor, evaluate and document
- Adaptive to changes in context and to learnings
- Potential to influence practices, policies and broader response
- Localisation as cross cutting theme

# SRF governance system

The composition of the SRF Governance Board:

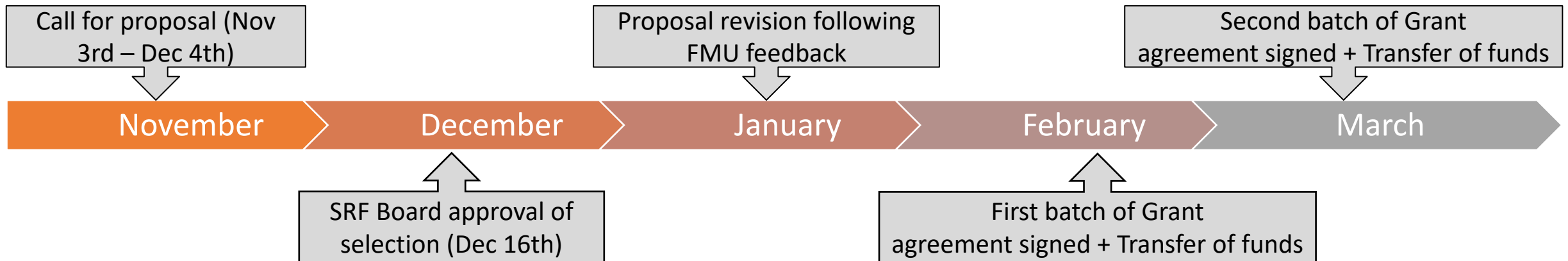
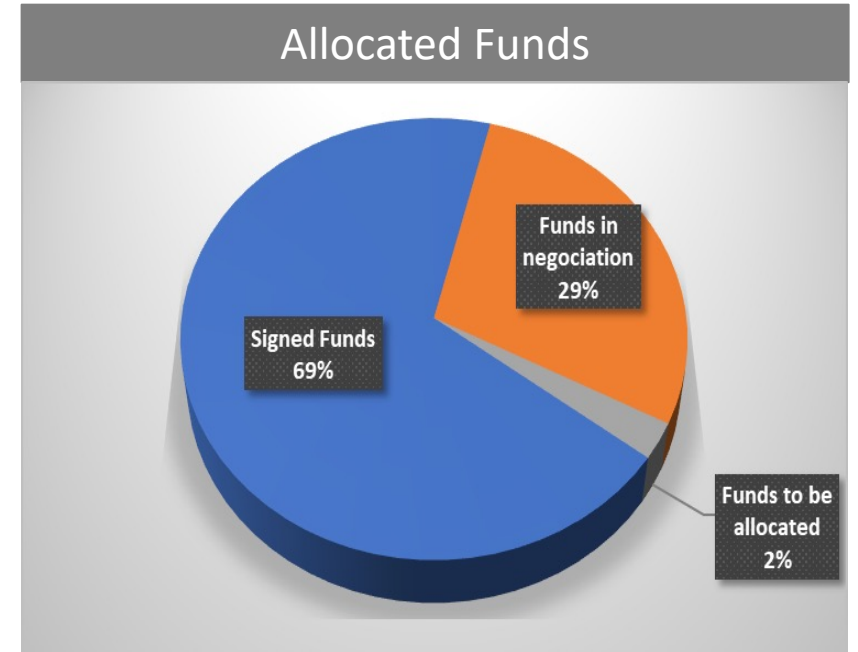
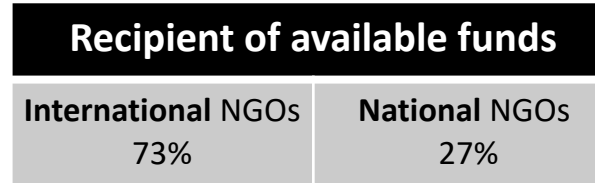
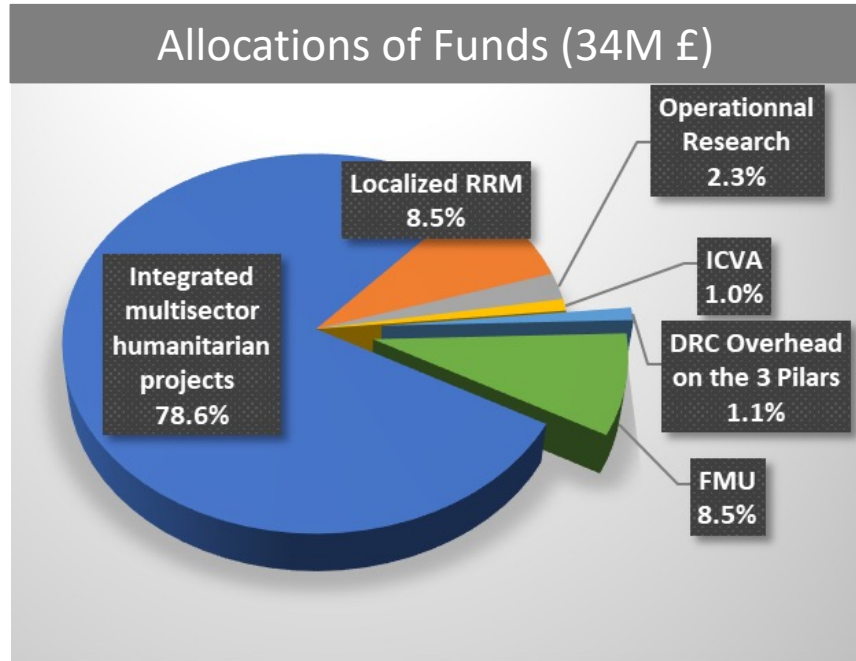
- ✓ Ensures a **representation** of INGO, donors, local organisations and independent observer(s)
- ✓ Prevents **Conflict of interest**
- ✓ Promotes **collective governance**
- ✓ Aims to reach **equality between INGO/NNGO** in next board rotation



Permanent Members		
 <b>SRF Host</b>	 <b>SRF Donors</b>	 <b>Independent observer(s)</b>

Non Permanent Members						
<b>5 INGOs</b>						
<b>3 National NGOs</b>						

# Key figures & Timeline



# SRF Funding allocation strategy (Séverine -5mn)

## 3 mutually reinforcing pillars toward localisation

### Development Phase (2024-2027)

Pillar	SRF Theory of Change	Envisioned modalities	Funding allocation (USD)				
			Up to 0,5M	Up to 1M	Up to 3M	Up to 12M	Up to 60M
1	Integrated multisector & multi country consortia	Call for proposals led by INGOs in partnership with NNGOs					
2	NNGO Consortia	1. Co- development localisation strategy with NNGO 2. Simplified call for proposal to NNGOs followed by project co-design phase					
3	Catalytic window	1. Operational research 2. Strengthening coordination synergy at national/regional level between NGOs					

### Key messages from SRF national partners/platforms:

- N/LNGO have different capacity, willingness to professionalize their organisations & stressed their concerns to be exposed to losses due to complex donor requirements and complex operational reality they are facing.
- Some N/LNGO will prefer to continue to work under INGO led consortia or with INGO as sub grantee
- Amount allocated to the various funding window must be tied to risks & performance = SRF board decision

# SRF knowledge sharing

## SRF potential to influence practices, policies and broader response

- Development of a participative localisation strategy
- ICVA led consultancy to assess the governance and operational model of the NGO-hosted funds
- Explore cross cutting priorities with OCHA RhPF for collective learning
- Form evidence of higher quality (outcome level change), better VfM and how flexibility funding strengthen AAP
- Engage in risk sharing discussion with our donors to build acceptable risk sharing model for the SRF

Risk management approach in the aid sector should not focus on identifying risk to single organisations, but rather considering risk to the humanitarian response as a whole



# Thank you for your interest in the Sahel Regional Fund

Please don't hesitate to register to our **newsletter** through our website [www.sahelregionalfund.org](http://www.sahelregionalfund.org) and to follow us on **twitter**: [@Sahel\\_R\\_Fund](https://twitter.com/Sahel_R_Fund)

**Next SRF event: UN State members brief in Geneva planned after summer break**

