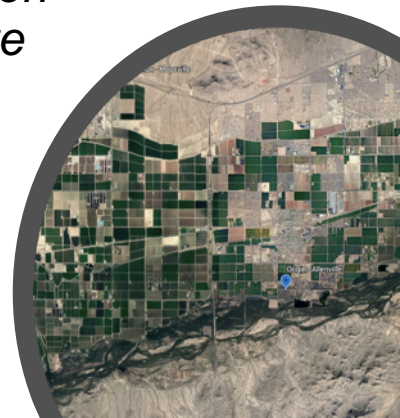


Leaving Place, Restoring Home:

*Enhancing the Evidence on Planned Relocation
in the Context of Hazards, Disasters & Climate*

Sanjula Weerasinghe & Erica Bower
May 2021



Why this research?

Salience

- State and community use of 'planned relocation' (physical relocation + settlement) is evolving
- Tool to move people out of harm's way to reduce exposure

Challenge

- Past practice shows that relocations undermine socio-economic prosperity and cultural practices
- First step to better policy and practice is to develop an evidence base on scale, diversity and characteristics of cases

What is planned relocation?

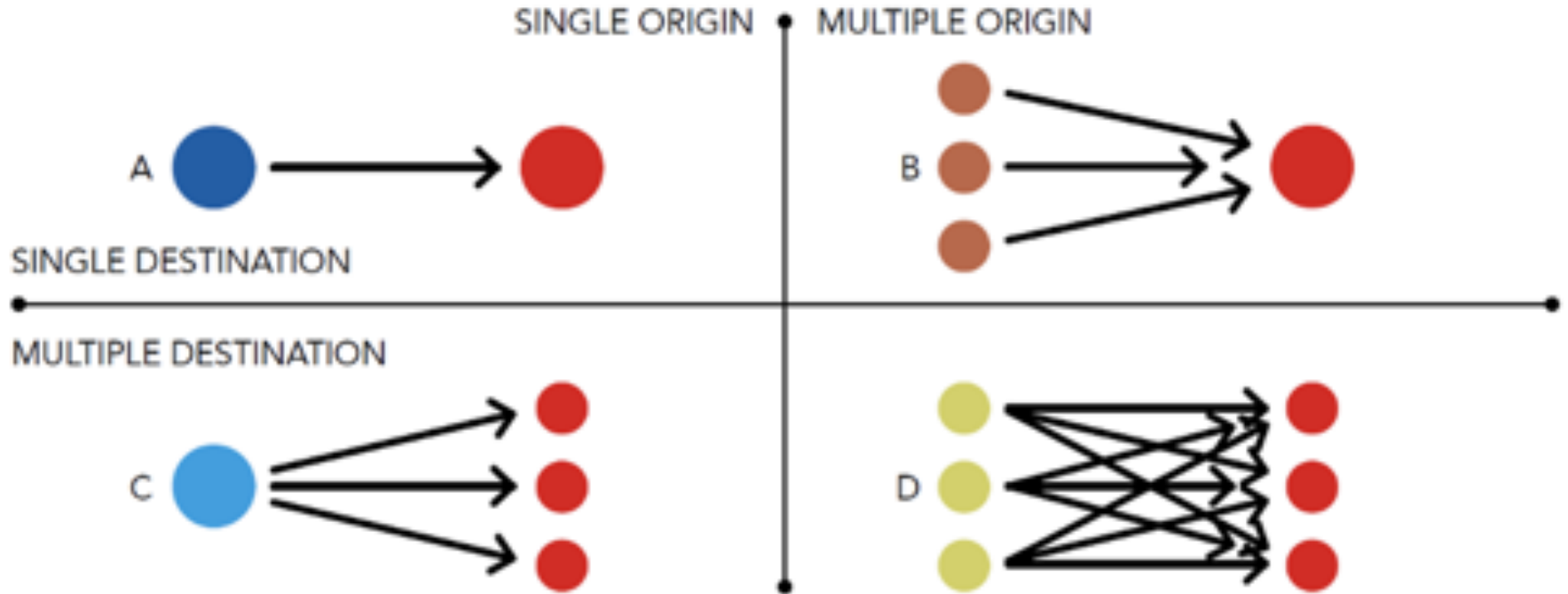
The planned, permanent movement of a group of people from identifiable origin(s) to identifiable destination(s), predominantly in association with one or more natural hazard(s).

Our findings: A global phenomenon

Figure 3. Geographic distribution of identified cases, by country



Multiple patterns of relocation



Why?



Multi-hazard
context



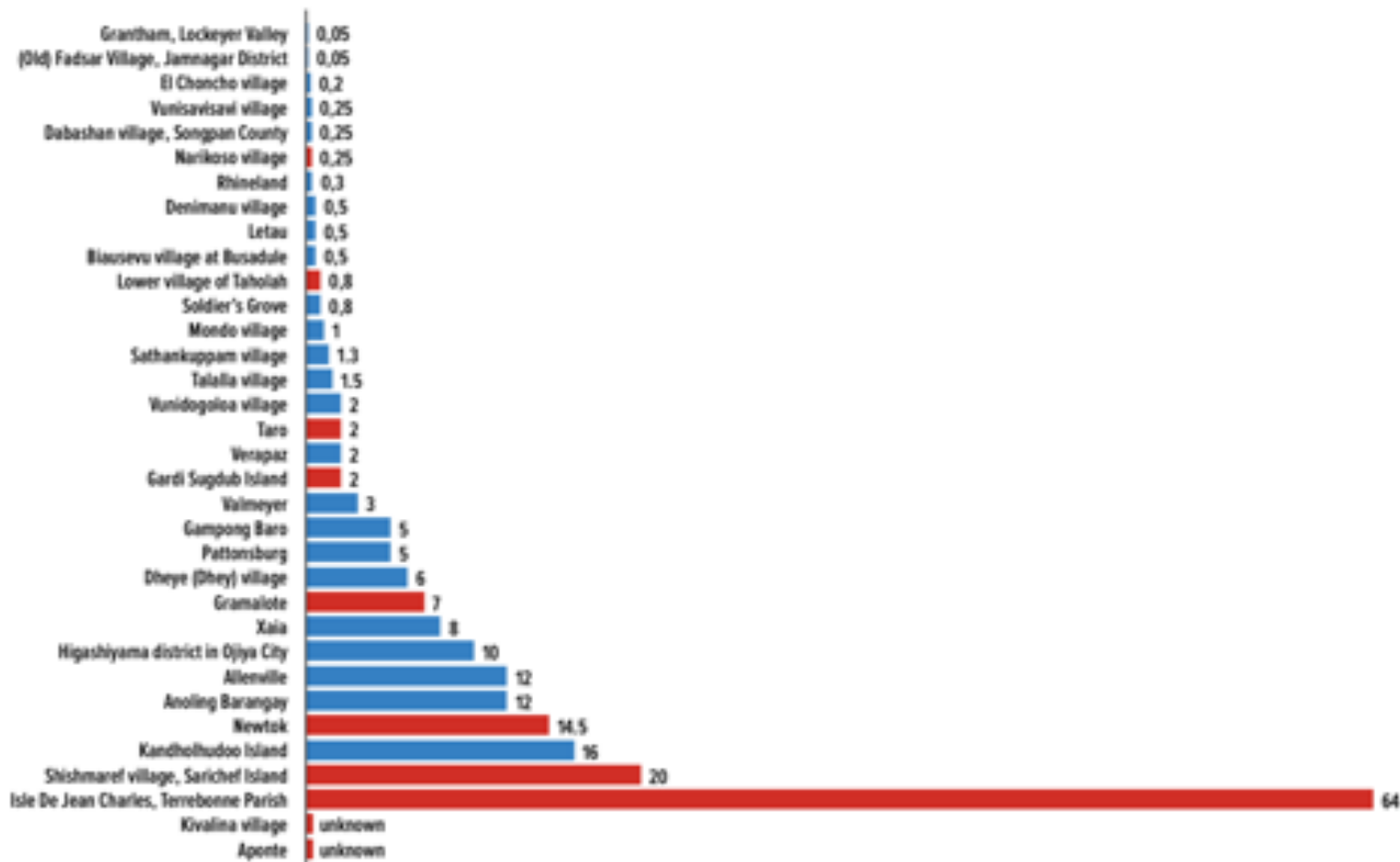
Multiple
motivations



Displacement

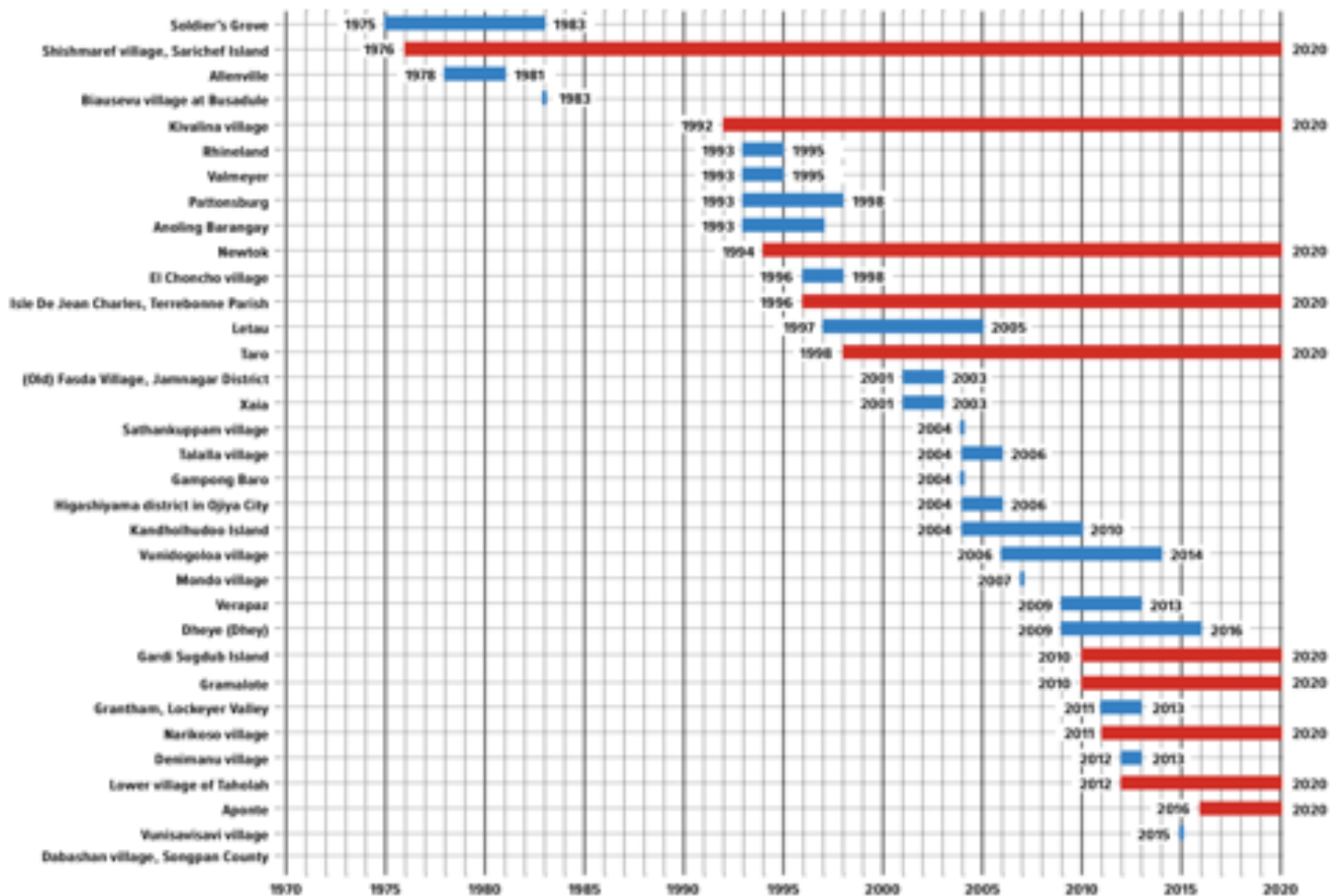
How far?

Figure 5. Distance between origin and destination sites (in kilometers)

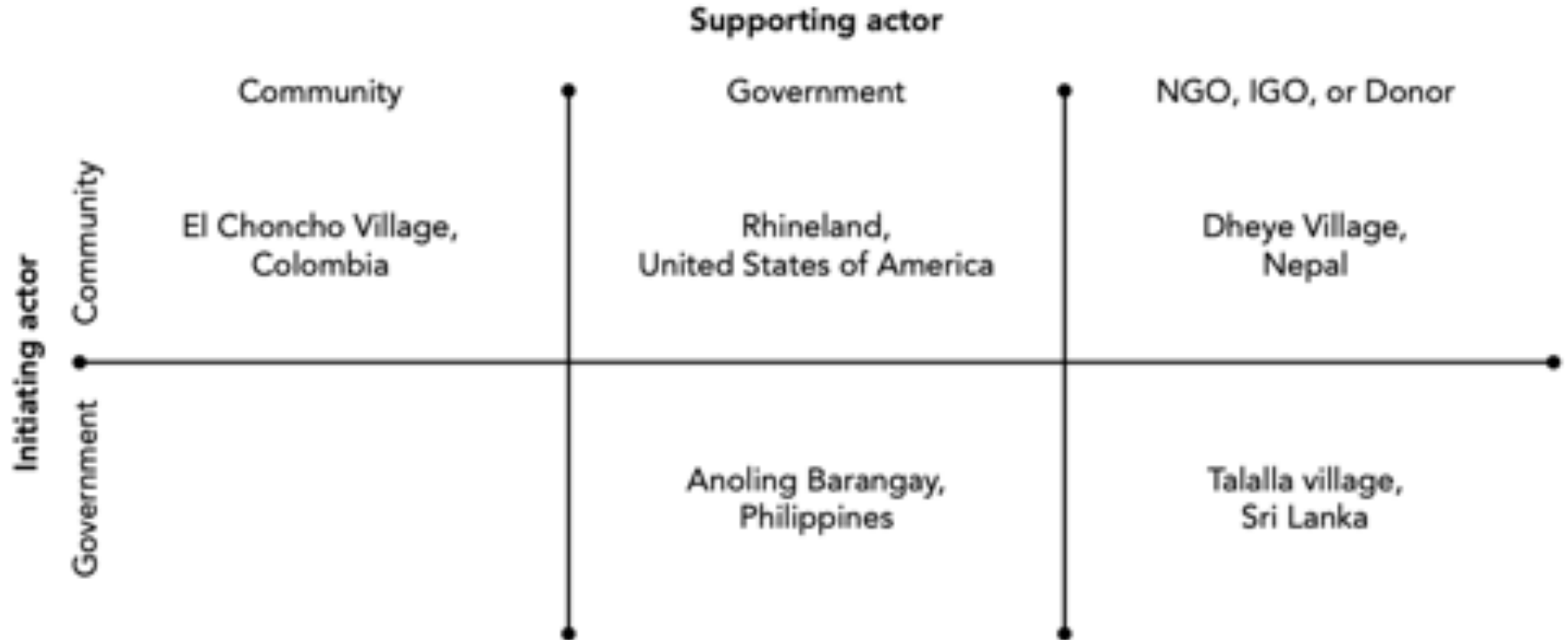


How long?

Figure 7. Year of initiation and year of completion in single origin - single destination cases



Who is involved in these cases?



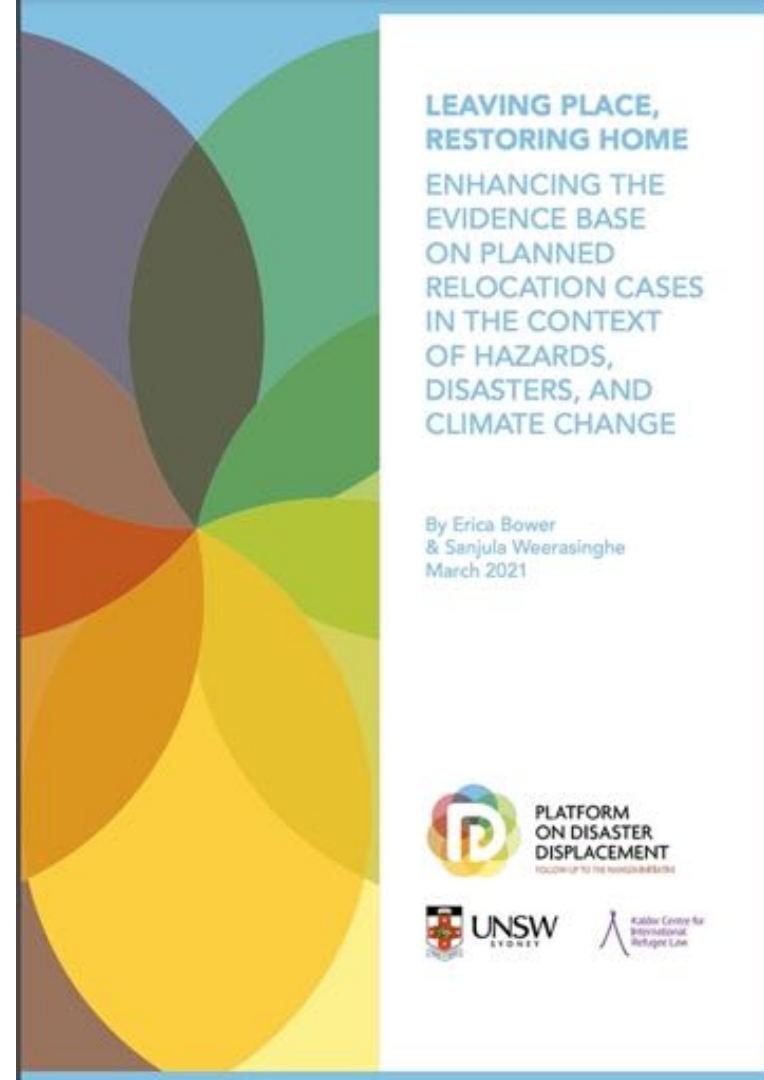
What are
common
challenges?

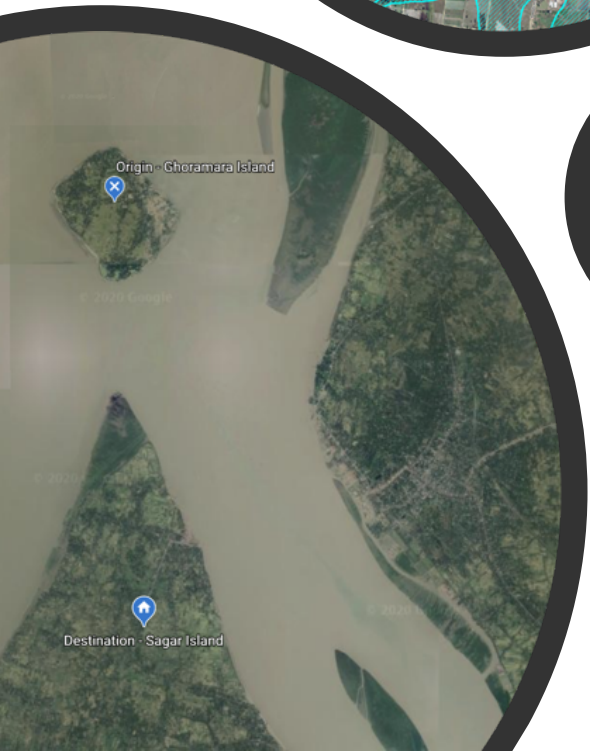
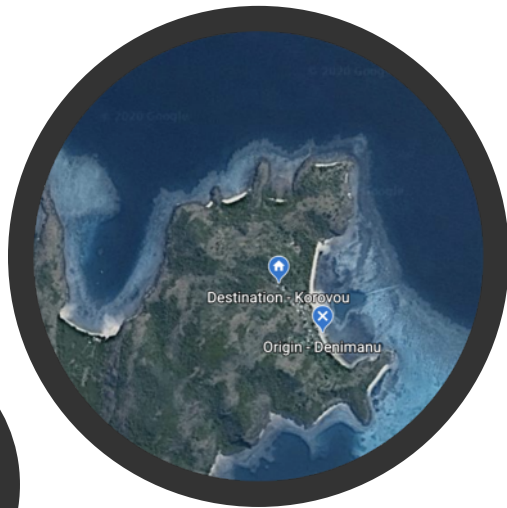


Vunidogoloa Climate Change Relocation Project, Fiji 2014. Image @ Nansen Initiative

Complementary ongoing work

- IOM
- GIZ

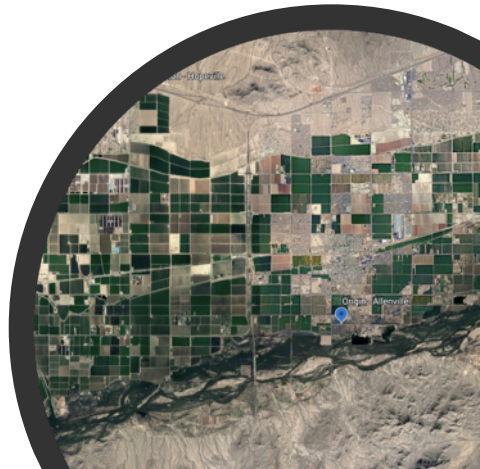




Thank you!

Sanjula Weerasinghe:
ssw33@georgetown.edu

Erica Bower: ebower@stanford.edu



Questions for discussion

- What experience do you have with planned relocation?
- What challenges have you seen in practice?
- What other characteristics would you like to know about the process?
- Are you assessing outcomes / what aspect do you focus on?
- What other data and knowledge gaps exist?
- How are non-governmental actors engaged in planned relocation?