

ABOUT CBPFs

Invest in Humanity



Country-Based Pooled Funds (CBPFs) make funding directly available to humanitarian partners operating in countries affected by natural disasters and armed conflict so they can deliver timely and effective life-saving assistance.

HOW CBPFs WORK

CBPFs are established by the UN Emergency Relief Coordinator (ERC) when a new emergency occurs or when an existing humanitarian situation deteriorates.

Contributions from donors are collected into single, unearmarked funds to support local humanitarian efforts. The 18 CBPFs that were active in 2019 received US\$956 million.

Funds are directly available to a wide range of relief partners at the front lines of the response through an inclusive and transparent process in support of priorities set out in crisis-specific Humanitarian Response Plans.

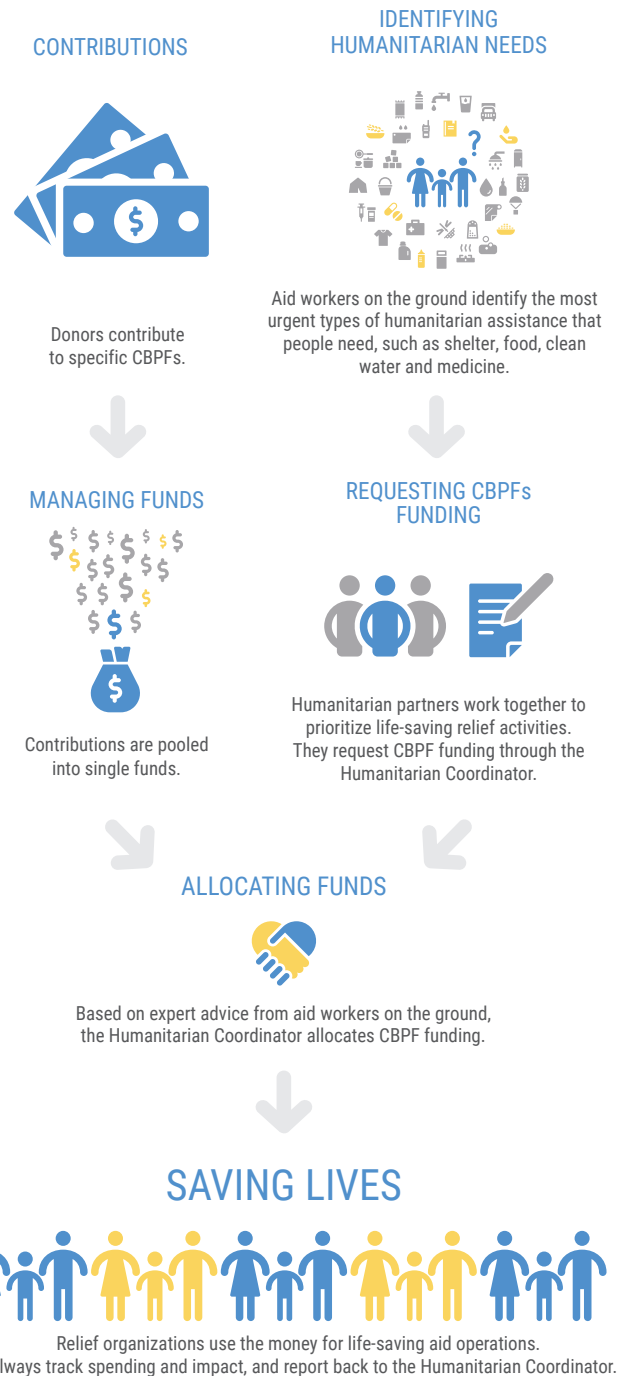
This ensures that funding is available and prioritized at the local level by those closest to people in need, empowering humanitarian leadership and fostering collaboration and collective ownership of the emergency response.

CBPFs support the delivery of an agile response and encourage effective and efficient use of available resources. They help to minimize transaction costs and provide transparency and accountability with recipient organizations thoroughly assessed and projects monitored with regular reporting on achievements.

CBPF allocations are designed to complement other humanitarian funding sources, such as the Central Emergency Response Fund and bilateral funding.

CBPF MANAGEMENT

CBPFs are locally managed by the UN Office for the Coordination of Humanitarian Affairs (OCHA) under the leadership of the Humanitarian Coordinator and in consultation with the humanitarian community. Advisory Boards oversee the Funds, providing advice on key decisions, and ensuring efficient and effective management. At the global level, the Pooled Fund Working Group brings together key stakeholders (representing donors, NGOs and UN agencies) to provide policy guidance.



The boundaries and names shown and the designations used on this map do not imply official endorsement or acceptance by the United Nations.

Creation date: 10 January 2020 Sources: OCHA www.unocha.org www.reliefweb.int

Latest on contributions and allocations: <https://pfb.unocha.org/>



FUNDING RECIPIENTS

Funding from CBPFs is directly available to UN agencies, national and international non-governmental organizations (NGOs) and Red Cross/ Red Crescent organizations.

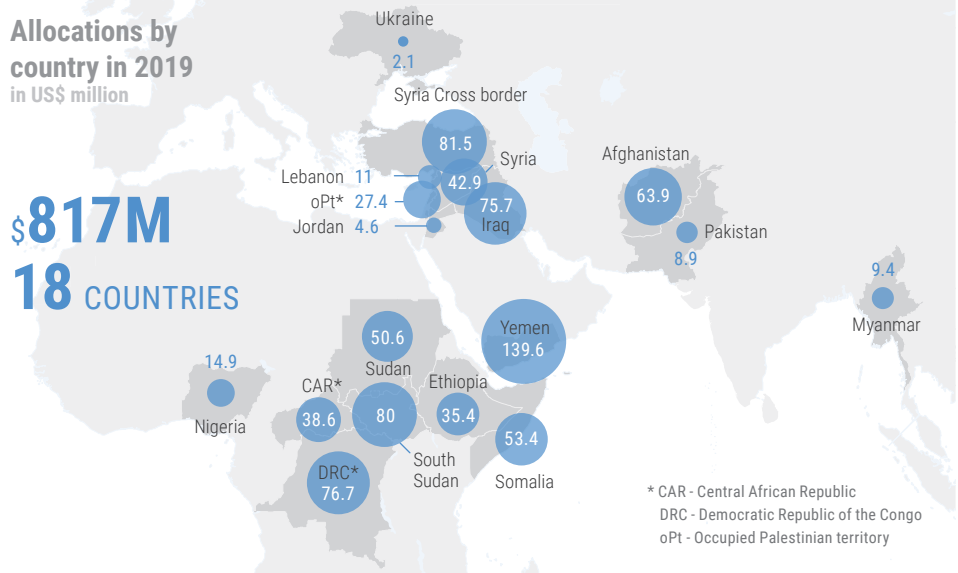
In 2019, CBPFs allocated more than \$817 million to 708 partners in 18 countries to support 1,390 critical humanitarian projects. These projects targeted millions of people with healthcare, food aid, clean water, shelter and other life-saving assistance.

The highest amounts were allocated in Yemen (\$139.6 million), Syria Cross border (\$81.5 million), South Sudan (\$79.9 million). Allocations in support of people affected by the crisis in Syria totaled \$139.9 million through funds in Jordan (\$4.6 million), Lebanon (\$11 million), Syria (\$42.9 million) and Syria Cross border (\$81.5 million).

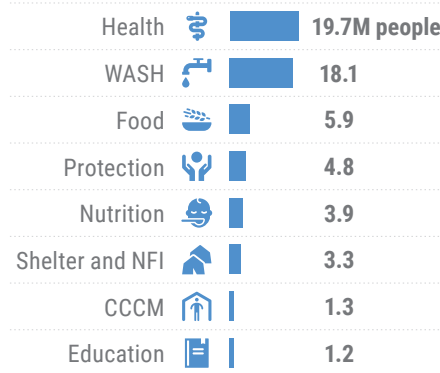
* CBPFs also supported multi-sectors, logistics, early recovery and emergency telecommunications. Reporting on actual beneficiaries reached ongoing.

Allocations by country in 2019 in US\$ million

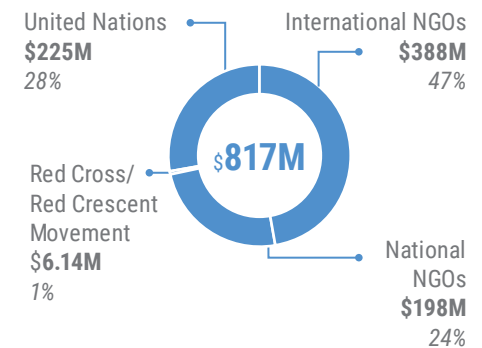
\$817M
18 COUNTRIES



People supported by sector*



Allocations by partner type in US\$ million



CONTRIBUTORS

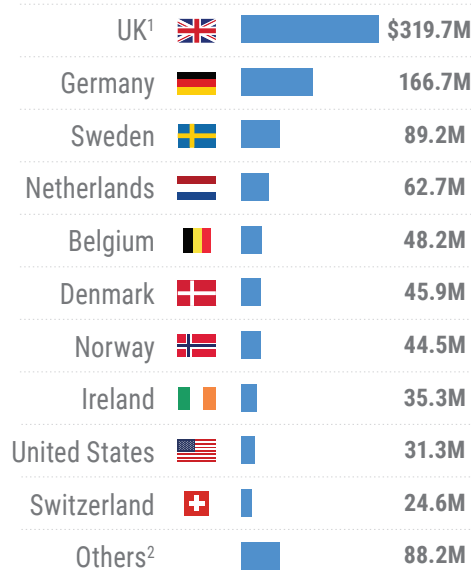
CBPFs are funded by voluntary contributions from Governments and private donors.

Since the first CBPF was opened in Angola in 1997, donors have contributed more than \$6 billion to 28 funds operating in the most severe and complex emergencies around the world. In 2019, donors contributed a record \$956 million to CBPFs in 18 countries.

In 2019 CBPFs received

\$956M
FROM **36** DONORS

Top 10 donors in 2019



¹ United Kingdom

² For a complete list of CBPF donors go to:
<https://pfbi.unocha.org/>

DONATE

01 Member States, observers and other authorities that wish to contribute to CBPFs can contact the OCHA Donor Relations Section (ocha.donor.relations@un.org)

02 Individuals, corporations and foundations can visit <http://bit.ly/GiveToCBPFs> to contribute directly to CBPFs.

03 For general information about CBPFs please visit http://bit.ly/OCHA_CBPFs